

GARMENT DESCRIPTION
Standard Coat (Centre Zip)

Typical Use
Cleanroom & Isolators

Colour
Blue

Size available		
XXS	✓	80 – 84
XS	✓	88 – 92
S	✓	96 - 100
M	✓	104 – 108
L	✓	112 – 116
XL	✓	120 – 124
XXL	✓	128 – 132
XXXL	✓	136 – 140
XXXXL	✓	144 - 148

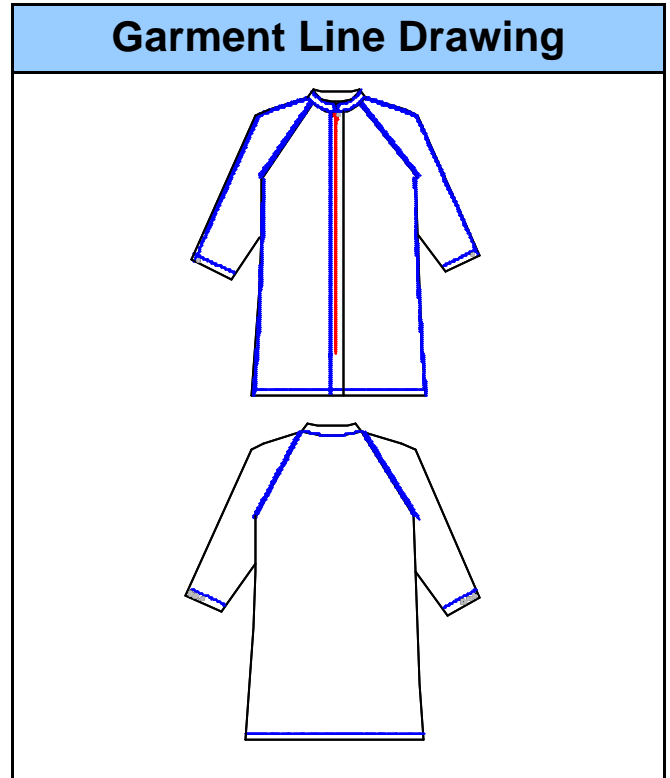
Pockets	
NO POCKETS	✓
INSIDE POCKET	
1 INSIDE BREAST	
2 INSIDE BREAST PKTS	
2 INTERNAL SWING PKTS & 1 INSIDE BREAST PKT	
2 ACCESS PKTS & 1 INTERNAL BREAST PKT	
3 OUTSIDE PATCH PKTS	
3 OUTSIDE PKTS	
4 OUTSIDE PKTS	

Cuff Type	
KNITTED	
ESD	
LYCRA	
PLAIN HEM	
STUD HEM	✓

Colour Collar available	Yes
-------------------------	-----

CODE	4N1
------	-----

Fabric & Weight
Vektron, WF5505JG, C3 / 145g/m <sup>2</sup>



Stock Situation			
Held @ Micronclean	✓	Supplier stock line	
Held @ Supplier	✓	Dedicated	
None Held			

ADDITIONAL GARMENT CONSTRUCTION INFORMATION
All panels are heat sealed and Cleanroom construction

Issue no : 1	Issued by	M Cartwright	Date	Dd/mm/yyyy
Page 1 of 1 Pages	Authorised for Use by RD & T Manager		Date	
D:\ISO 4 GMP Grade B Garments\Centre zip coat\Centre zip Coat.doc	Authorised for Sales by Sales Director		Date	