

GARMENT DESCRIPTION
Coat Unisex

Typical Use
Laboratory / Cleanrooms

Standard Colour
WHITE

Size available		
XXS	✓	80 – 84
XS	✓	88 – 92
S	✓	96 - 100
M	✓	104 – 108
L	✓	112 – 116
XL	✓	120 – 124
XXL	✓	128 – 132
XXXL	✓	136 – 140
XXXXL	✓	144 - 148

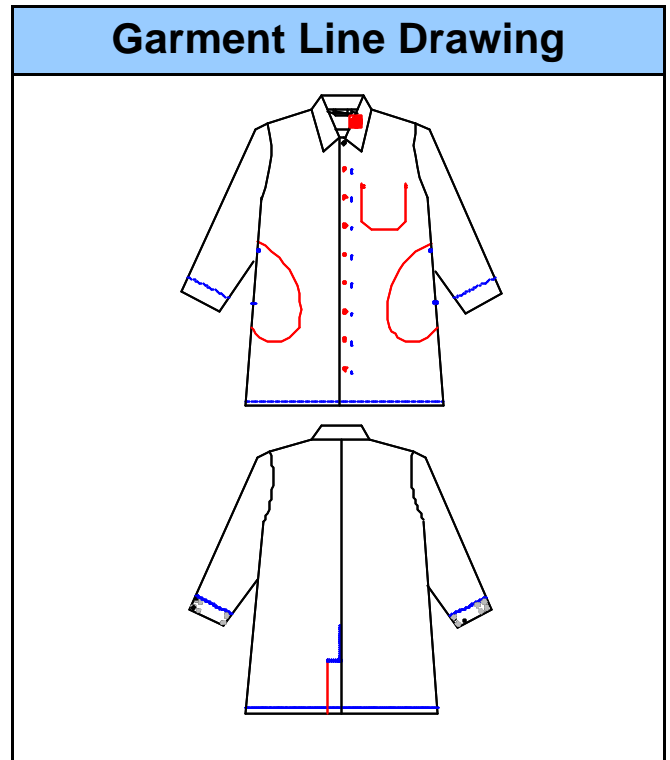
Pockets	
NO POCKETS	
INSIDE POCKET	
1 INSIDE BREAST	
2 INSIDE BREAST PKTS	
2 INTERNAL SWING PKTS & 1 INSIDE BREAST PKT	✓
2 ACCESS PKTS & 1 INTERNAL BREAST PKT	
3 OUTSIDE PATCH PKTS	
3 OUTSIDE PKTS	
4 OUTSIDE PKTS	

Cuff Type	
KNITTED	
LYCRA	
PLAIN HEM	
STUD HEM	✓

Colour available	Yes
-------------------------	-----

CODE	CLx
------	-----

Fabric	Summit, Peak or Polycotton
--------	----------------------------



Stock Situation			
Held @ Fenland	✓	Supplier stock line	
Held @ Supplier	✓	Dedicated	
None Held			

ADDITIONAL GARMENT CONSTRUCTION INFORMATION
Polycotton for general workwear, peak = 100% polyester microfibre waterproof, Summit 100% polyester

Issue no : 1	Issued by	M Cartwright	Date	Dd/mm/yyyy
Page 1 of 1 Pages	Authorised for Use by RD &T Manager		Date	
D:\ISO 6 Garments\Unisex Coat\Coat Unisex.doc	Authorised for Sales by Sales Director		Date	