

GARMENT DESCRIPTION
Tunic Long Sleeves

Typical Use
Factory Uniform / Under Garments

Colour
Navy

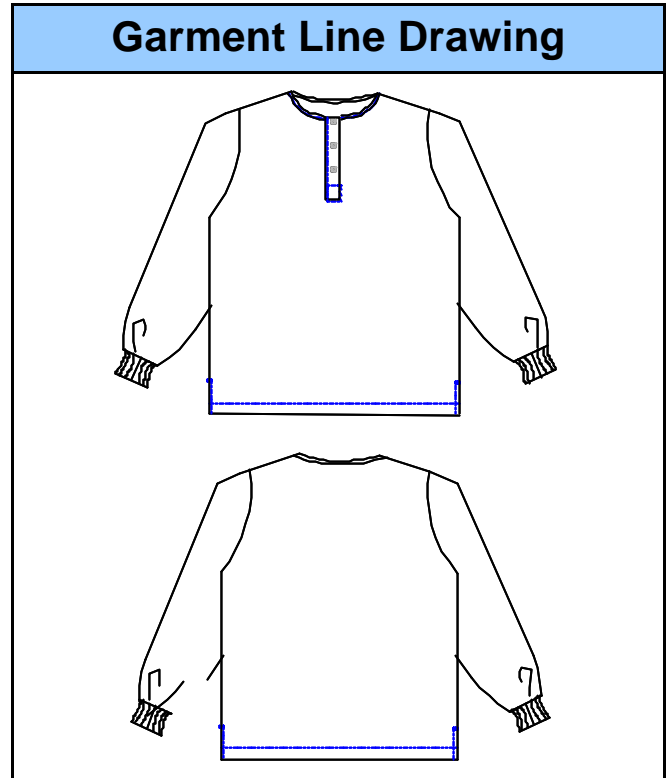
Size available		
XXS	✓	80 – 84
XS	✓	88 – 92
S	✓	96 - 100
M	✓	104 – 108
L	✓	112 – 116
XL	✓	120 – 124
XXL	✓	128 – 132
XXXL	✓	136 – 140
XXXXL	✓	144 - 148

Pockets	
NO POCKETS	✓
INSIDE POCKET	
1 INSIDE BREAST	
2 INSIDE BREAST PKTS	
2 INTERNAL SWING PKTS	
2 ACCESS PKTS & 1 INTERNAL BREAST PKT	
3 OUTSIDE PATCH PKTS	
1 EXTERNAL REAR PKTS	
4 OUTSIDE PKTS	

Hem Type	
KNITTED	
LYCRA	✓
PLAIN HEM	
STUD HEM	

CODE	UTy
------	-----

Fabrics
Carsington / Sandwash / Cooldry



Stock Situation			
Held @ Fenland	✓	Supplier stock line	
Held @ Supplier	✓	Dedicated	
None Held			

ADDITIONAL GARMENT CONSTRUCTION INFORMATION
Carsington and Sandwash Fabric has antistatic yarn. Short-sleeved version also standard.

Issue no : 1	Issued by	M Cartwright	Date	Dd/mm/yyyy
Page 1 of 1 Pages	Authorised for Use by RD & T Manager		Date	
D:\ISO 6 Garments\Cleanroom undergarment top\Tunic - Long Sleeve Under Garment.doc	Authorised for Sales by Sales Director		Date	