

GARMENT DESCRIPTION

Coverall

Typical Use

Industrial Paint Facilities

Standard Colour

Navy

Size available

XXS	✓	80 – 84
XS	✓	88 – 92
S	✓	96 - 100
M	✓	104 – 108
L	✓	112 – 116
XL	✓	120 – 124
XXL	✓	128 – 132
XXXL	✓	136 – 140
XXXXL	✓	144 - 148

Pockets

NO POCKETS	
1 INSIDE POCKET	
2 TROUSER ACCESS FLAPS	
1 INSIDE HIP POCKET	
2 EXTERNAL BREAST PKTS	
2 INTERNAL SWING PKTS & 2 EXTERNAL BREAST PKT	
2 ACCESS PKTS & 1 INTERNAL BREAST PKT	
2 OUTSIDE PATCH PKTS	✓
3 OUTSIDE PKTS	
4 OUTSIDE PKTS	

Cuff Type

KNITTED	
LYCRA	✓
PLAIN HEM	
STUD HEM	

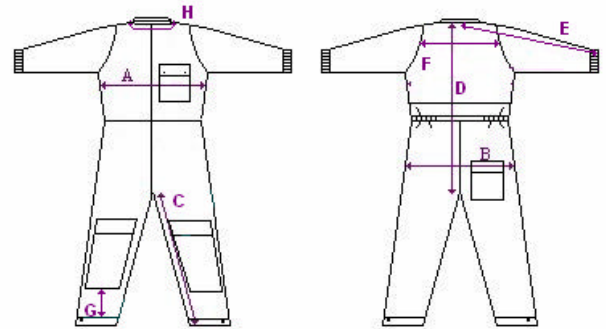
Colour available	Yes
------------------	-----

CODE	Yxx
------	-----

Fabric & Weight

Cleantec / 150g/m²

Garment Line Drawing



Stock Situation

Held @ Fenland	✓	Supplier stock line	
Held @ Supplier	✓	Dedicated	
None Held			

ADDITIONAL GARMENT CONSTRUCTION INFORMATION

All Edges Heat Sealed

Issue no : 1	Issued by	M Cartwright	Date	Dd/mm/yyyy
Page 1 of 1 Pages	Authorised for Use by RD & T Manager		Date	
D:\ISO 6 Garments\Paint Spray Coverall\Y61 Paint Facility Coverall.doc	Authorised for Sales by Sales Director		Date	